

For Lease

Executive Office Space

8100 E. 22nd Street, Bldg. #1800 Suite 2 | Wichita, KS

PROPERTY INFORMATION

Space Available
1,620 SF

Lease Rate
\$17.50/SF

Lease Type
Full Service

CONTACT INFORMATION

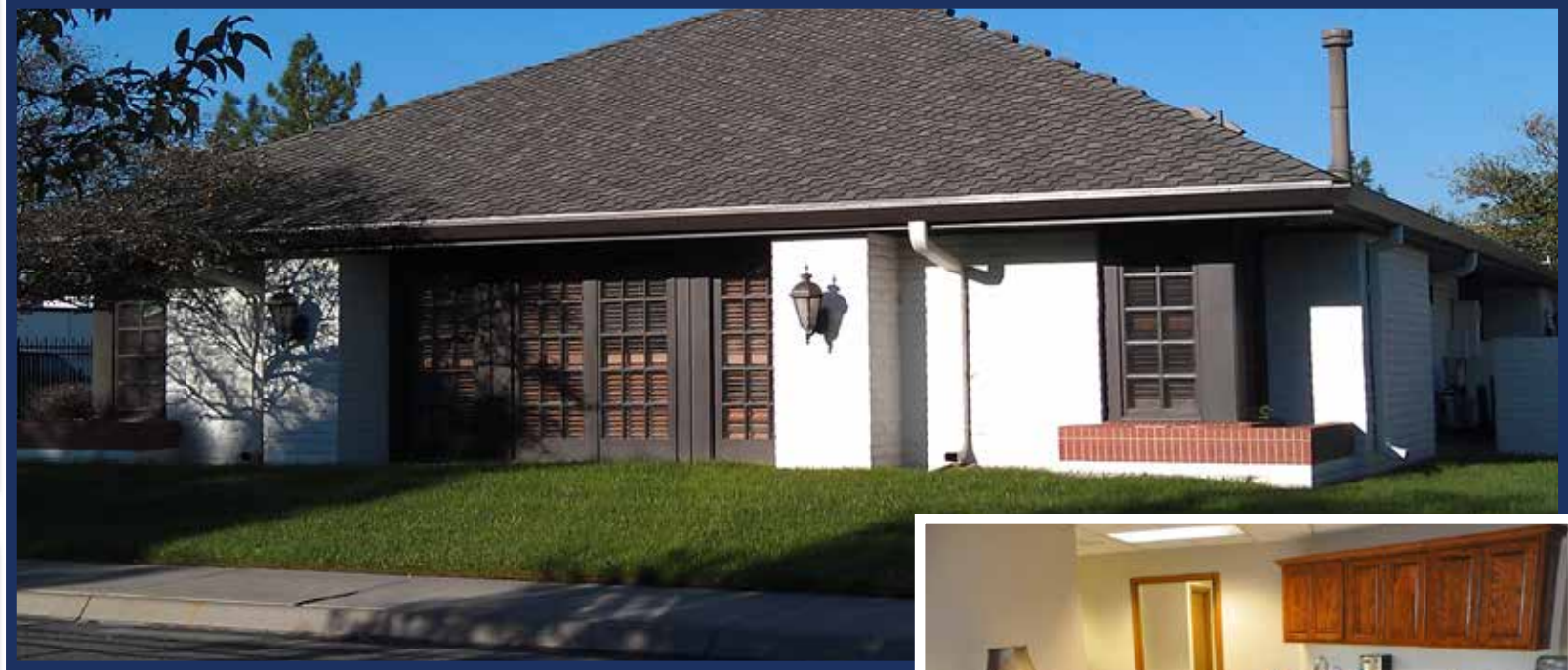
Mark Murphy

(316) 618-1100
mmurphy@insitere.com

Carl Hebert, CCIM

(316) 618-1100
cjhebert@insitere.com

InSite Real Estate Group
608 W. Douglas, Suite 106
Wichita, KS 67203



Tallgrass Executive Office Park Near 21st St. and Rock Rd.

- ✓ Functional Floor Plan
- ✓ 4 Private Offices
- ✓ Abundance of Windows
- ✓ Attractive Landscaping
- ✓ Close to Banks, Restaurants, and Services
- ✓ Private Entrance
- ✓ Reception Area
- ✓ Ample Door-Side Parking
- ✓ Premiere Location Near Entrance to Office Park



Like/Follow us!
   **InSite**
REAL • ESTATE • GROUP

For Lease

Executive Office Space

8100 E. 22nd Street, Bldg. #1800 Suite 2 | Wichita, KS

PROPERTY INFORMATION

Space Available
1,620 SF

Lease Rate
\$17.50/SF

Lease Type
Full Service



CONTACT INFORMATION

Mark Murphy
(316) 618-1100
mmurphy@insitere.com

Carl Hebert, CCIM
(316) 618-1100
cjhebert@insitere.com

InSite Real Estate Group
608 W. Douglas, Suite 106
Wichita, KS 67203

AREA NEIGHBORS

Dillons
Meritrust Credit Union
Best Buy
McDonalds
Dick's Sporting Goods
Banana Republic

Hilton Garden Inn
UPS Store
Tallgrass Country Club
Gap
Pottery Barn
Verizon

Like/Follow us!
 **InSite**
REAL • ESTATE • GROUP